



we offer solutions... not problems!

www.commercialmarinewa.com.au | 08 9408 0896 | 0407 770 676

Introduction



Shorewater Marine Pty Ltd is a Commercial Diving, Marine Construction and Marine Asset maintenance service provider operating in Western Australia.

Shorewater is a quiet achiever with work carried out in a professional low key manner, whilst exercising sound judgement and discretion for a range of clients. Nearly all our work is referral and repeat business with virtually no advertising. Shorewater Marine has the equipment and personnel to mobilise immediately in Western Australia or Nationally on a moment's notice.

Shorewater Marine has a team of well-rounded personnel with a proven ability to understand the demands of the marine industry, this enables us to adapt quickly to your requirements in order to safely, effectively and efficiently complete the task at hand. Shorewater Marine is experienced in all facets of marine based construction, our team of highly skilled individuals consist of Commercial Divers with trade backgrounds in Steel Fabrication & Boiler Making, Carpentry and Plumbing.



Underwater Welding & Cutting

Shorewater Marine's preference of employing tradesman Commercial Divers ensures that only qualified steel fabricators and welders are used to complete Underwater Welding and Underwater Cutting projects safely and efficiently.

Our previous experience with underwater welding includes Mine shutdown work carrying out diving projects on pumping stations, firewater tanks and processing plants. With our civil work including projects on traffic, railway and pedestrian bridges.



Underwater Pile Cutting - Steel, Timber & Concrete

Shorewater Marine is experienced in a range of underwater cutting techniques for all composites of pile, previously we have successfully cut and extracted steel, timber and concrete piles with a range of techniques. Our options for cutting include; ultra thermic, pneumatic hydraulic and diamond wire saw.



Pile Restoration & Protection

Shorewater Marine is experienced in all facets of marine pile restoration included but not limited to pile wrapping and repair, fibre glass injection grout repairs. Implementing, installing, inspecting and monitoring cathodic protection systems such as sacrificial anodes or impressed current systems.

We are a licensed applicator of Denso Seashield Splash Zone and Subsea protective coatings and have experience in the design and implementation of rust proofing systems, utilising petrolatum based compounds & coatings.



Corrosion Control & Prevention



Shorewater Marines team of experienced Commercial Divers are proficient in the implementation and application of various forms of corrosion protection and prevention systems both Subsea and Surface.

Our experience also includes Environmental hydro blasting and re-application of protective paint coatings on marine structures and assets including jetties, piles, sheet wall piling, superstructures and vessel hulls.



In Water Surveys & Inspections

Our divers are proficient in conducting above water, water line, subsea and below seabed inspections via seabed excavation on marine based structures and assets, our experience in this field includes but is not limited to:

- Ultrasonic Thickness Testing (UTT) on above and below water steel structures and assets.
- Core testing and inspection of load bearing timber components such as pylons and bearers.
- Protective paint coating thickness and condition inspections.
- Jet probing and seabed core sampling capabilities.
- Stress testing & tensioning of bar anchors.
- Photographic inspections.
- Bathymetry.
- CCTV Video Inspection with live to surface playback capabilities.
- Detailed reporting.



Miscellaneous Marine Services

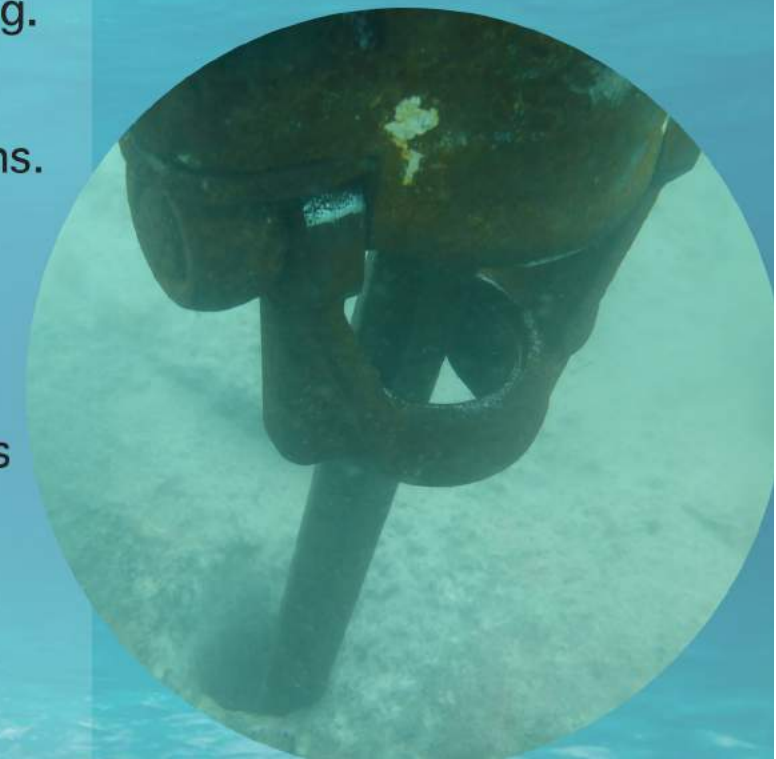
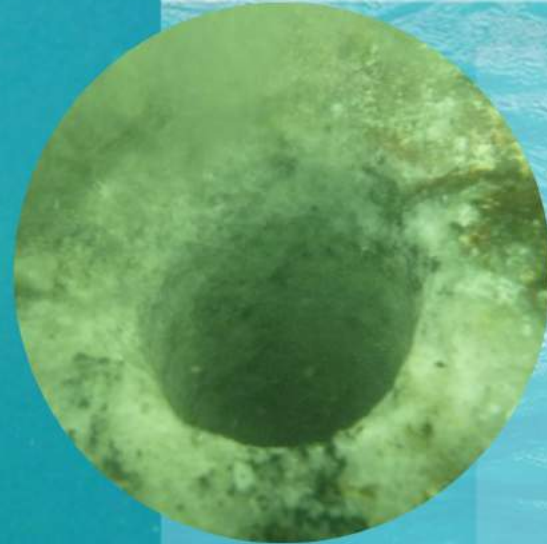
Our capabilities are not limited to Commercial Diving, our range of Commercially Surveyed work vessels, work barges and pontoons coupled with our employees broad knowledge of the marine industry and our preference for trade backgrounds, provide our clients with the diversity required in the marine industry our additional services include but are not limited to:

- Logistical vessel support.
- Vessel dry hire.
- Marine Carpentry.
- Marina asset maintenance.
- Steel fabrication.
- Licensed labour hire provider.
- Qualified in the removal of Asbestos Contaminated Materials.



Miscellaneous Diving Services

- Marine Salvage.
- Mooring Installations & Inspections.
* DOT Recognised Mooring Contractor.
- Navigational Aid Installation & Servicing.
- Photography & Videography Inspections.
- Concrete & Timber Core Drilling.
- Subsea Licensed Asbestos Removalists
- Boat Ramp Installation





Shaun Williamson
Managing Director

8/15 Dellamarta Road
Wangara 6065

shorewatermarine@bigpond.com

08 9408 0896 | 0407 770 676

Hayden Hill

Operations Manager

8/15 Dellamarta Road

Wangara 6065

shorewatermarine@bigpond.com

08 9408 0896 | 0487 748 700