





SHOREWATER MARINE PTY LTD

Shorewater Marine Pty Ltd is a Commercial Diving, Marine Construction and Marine Asset Maintenance service provider operating in Western Australia. Shorewater is a quiet achiever with work carried out in a professional low key manner, whilst exercising sound judgement and discretion for a range of clients. Nearly all our work is referral and repeat business with virtually no advertising. Shorewater Marine has the equipment and personnel to mobilise immediately in Western Australia or Nationally on a moments notice.

Shorewater Marine has a team of well-rounded personnel with a proven ability to understand the demands of the marine industry. This enables us to adapt quickly to your requirements in order to safely, effectively and efficiently complete the task at hand. Shorewater Marine is experienced in all facets of marine based construction, our team of highly skilled individuals consist of Commercial Divers with trade backgrounds in Steel Fabrication & Boiler Making, Carpentry and Plumbing.

ESTABLISHED IN: 2010



“ Delivering innovative marine based solutions through honest and reliable service

**We offer solutions...
not problems!**



CAPABILITIES

COMMERCIAL DIVING SERVICES

- IN-WATER SURVEYS & INSPECTION
- MARINE STRUCTURE SURVEYS & INSPECTION
- UNDERWATER CONSTRUCTION
- CORROSION CONTROL
- ABOVE AND UNDER WATER PAINTING
- ABRASIVE BLASTING
- VESSEL SALVAGE
- ROV OPERATIONS & SURVEY



JETTY CONSTRUCTION

- FIXED AND FLOATING JETTY CONSTRUCTION
- ENGINEERING SERVICES
- COMMERCIAL & PRIVATE JETTY CONSTRUCTION
- DEMOLITION OF EXISTING MARINE STRUCTURES
- REPAIR, MAINTENANCE & ASSET MANAGEMENT
- DRAFTING AND DESIGNS



FULLY LICENCED HIRE PROVIDER

- OCCUPATIONAL AIR DIVERS
- SPECIALISED MARINE LABOURERS
- COXSWAIN
- COMMERCIAL VESSEL HIRE
- ULTRASONIC THICKNESS TESTING METER
- LIFT BAGS
- HYDRAULIC EQUIPMENT
- MARINE ASSET INSPECTORS



DEFENCE

- PROPELLER POLISHING
- ROV INSPECTION
- IN WATER SURVEYS (IWS)
- NON-DESTRUCTIVE TESTING (NDT)
- SURFACE AND SUBMARINE FLEET DOCKING SUPPORT
- MOORING SERVICES
- SALVAGE, RESCUE AND RECOVERY
- INFRASTRUCTURE REMEDIATION & MAINTENANCE



MARINE ENVIRONMENTAL MONITORING

- MARINE MONITORS
- SEABED SAMPLING AND ANALYSIS
- OCEAN DATA COLLECTION
- OIL FUEL SPILL CLEAN UPS AND DAMAGE ASSESSMENT
- VESSEL HIRE





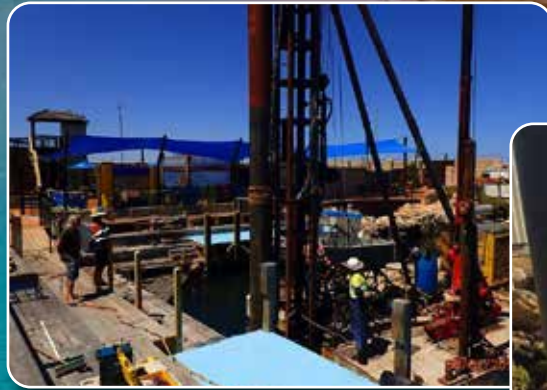


JETTY CONSTRUCTION

Shorewater Marine has successfully completed a diverse range of Marina, Harbour, and Canal Jetty Constructions and installations, showcasing our expertise in the industry. Our successful projects at prominent locations, including Hillarys Boat Harbour, Two Rocks Marina, Mindarie Marina, and the Cockburn Power Boats Association, underscore our proven experience in all aspects of marina construction and maintenance.

WE PROVIDE:

- FLOATING PONTOON INSTALLATION
- FIXED JETTY INSTALLATION
- MARINE PILE INSTALLATION
- ELECTRICAL AND PLUMBING SERVICES
- ELECTRICAL UPSTAND SUPPLY
- INSTALLATION OF FIRE SERVICES
- MARINE ASSET INSPECTIONS





UNDERWATER WELDING & CUTTING

Shorewater Marine's preference of employing tradesman commercial divers ensures that only qualified steel fabricators and welders are used to complete underwater welding and underwater cutting projects safely and efficiently.

Our previous experience with underwater welding includes mine shutdown work carrying out diving projects on pumping stations, firewater tanks and processing plants. With our civil work including projects on traffic, railway and pedestrian bridges.





UNDERWATER PILE CUTTING

STEEL, TIMBER & CONCRETE

Shorewater Marine is experienced in a range of underwater cutting techniques for all types of pile, we have successfully cut and extracted steel, timber and concrete piles with a range of techniques.

Our options for cutting include ultra thermic, hydraulic, pneumatic and diamond wire saw.



PILE RESTORATION & PROTECTION

Shorewater Marine is experienced in all facets of marine pile restoration, including but not limited to; pile wrapping and repair, injection grout repairs, implementing, installing, inspecting and monitoring cathodic protection systems such as sacrificial anodes or impressed current systems.

We are a licensed applicator of Denso Seashield Splash Zone and subsea protective coatings and have experience in the design and implementation of rust proofing systems, utilising petrolatum based compounds & coatings.





CORROSION CONTROL & PREVENTION

Shorewater Marine's experienced team are proficient in the implementation and application of various forms of corrosion protection and prevention systems both subsea and surface.

Our experience also includes environmentally friendly abrasive blasting and re-application of protective paint coatings on marine structures and assets including jetties, piles, sheet wall piling, superstructures and vessel hulls.



MINE SITE & CONTAMINATION DIVING

Shorewater Marine have a proven ability to execute subsurface works in water body environments that contain biological hazards. Our experience includes projects successfully completed in water bodies polluted with heavy metals, chemicals and mining by products in turkey nests, feeder ponds, lakes and wet wells. With projects also completed in water tanks and reservoirs where impeccable standards are required to mitigate contamination entering the water.

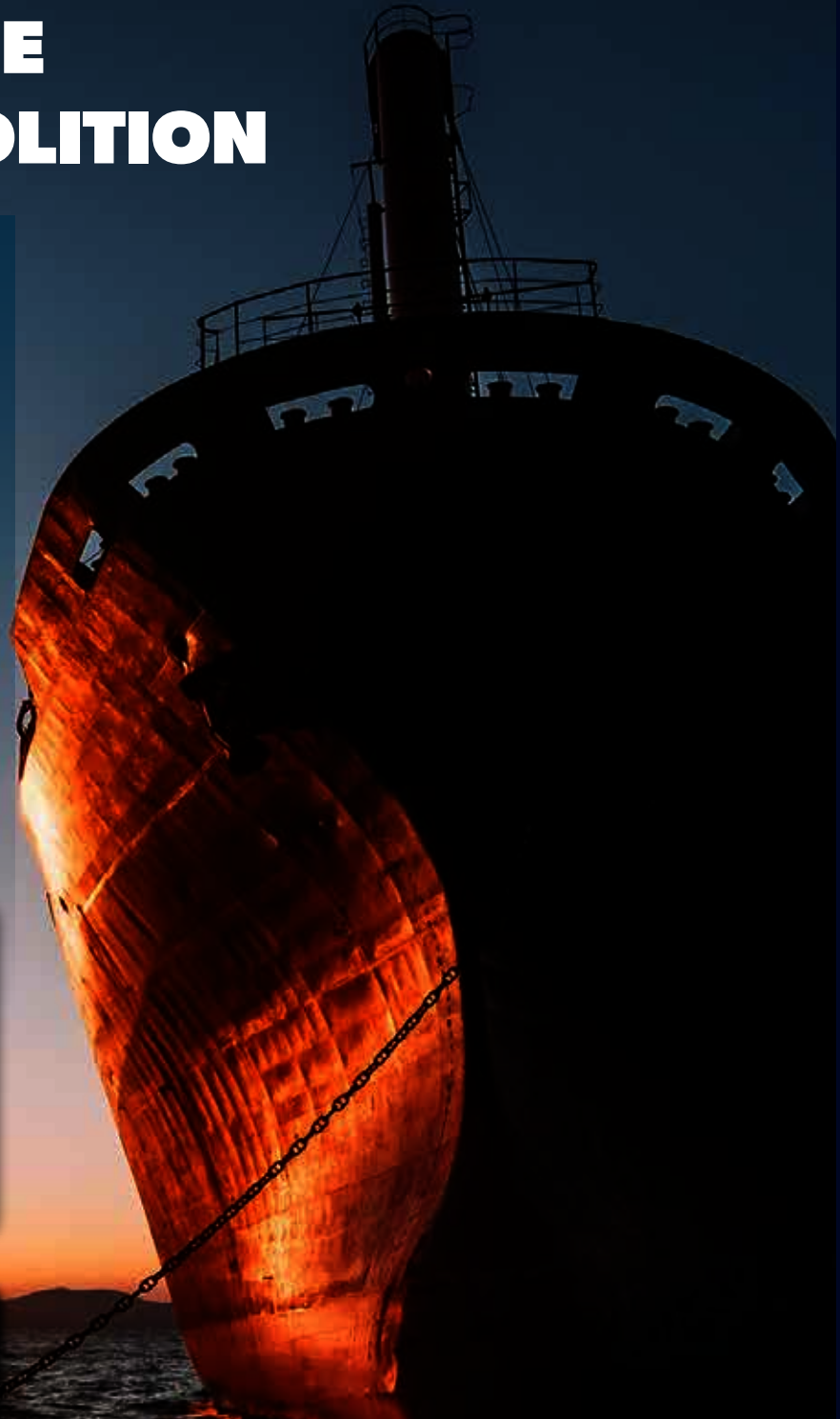


VESSEL SALVAGE & VESSEL DEMOLITION

Shorewater Marine has specific and varied experience salvaging commercial and recreational vessels along the WA Coastline.

Having salvaged vessels ranging in size from small recreational vessels to large commercial fishing trawlers, long liners, construction barges and landing platforms.

We are also experienced in the demolition of salvaged, wrecked and abandoned vessels. Having successfully demolished vessels floating in situ within marinas, harbours and clubs in environmentally sensitive areas. Our experience ranges from vessels weighing 4 tons to vessels weighing upwards of 400 tons.

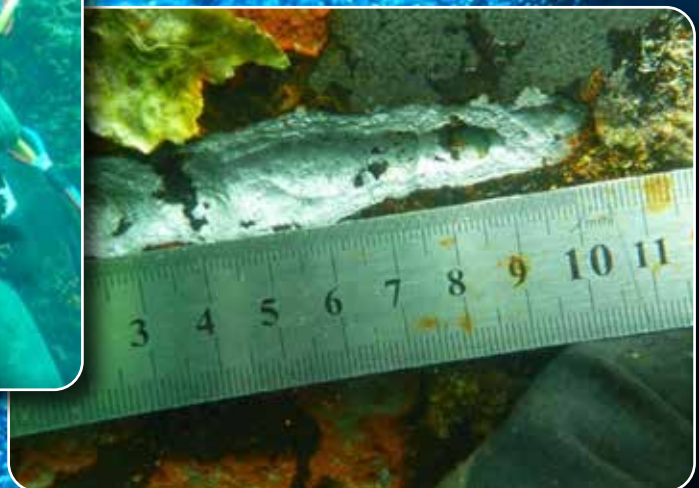


IN WATER SURVEYS & INSPECTIONS

Our divers are proficient in conducting above water, water line, subsea and below seabed inspections via seabed excavation on marine based structures and assets.

Our experience in this field includes but is not limited to:

- Ultrasonic Thickness Testing (UTT) on above and below water steel structures and assets
- Core testing and inspection of load bearing timber components such as pylons and bearers
- Protective paint coating thickness and condition inspections
- Jet probing and seabed core sampling capabilities
- Stress testing & tensioning of bar anchors
- Photographic inspections
- Bathymetry
- CCTV Video Inspection with live to surface playback capabilities
- Detailed reporting



MARINE SPECIFIC LABOUR HIRE

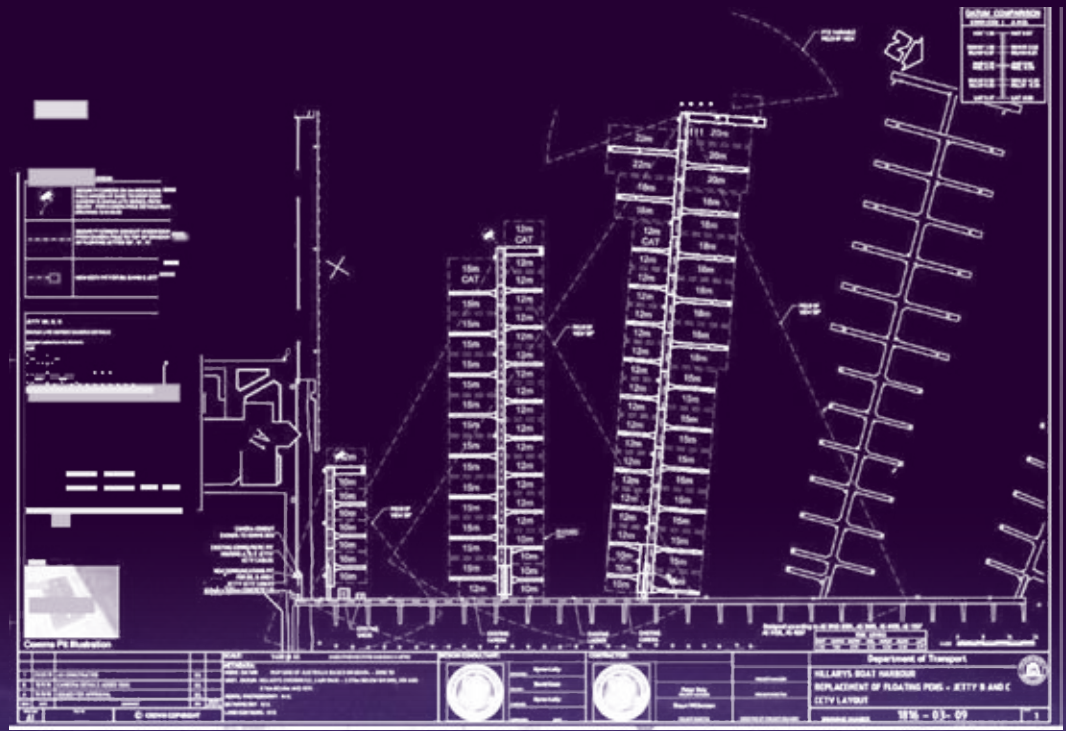
Shorewater Marine Pty Ltd has the capability to offer labour, equipment, and vessel hire to those seeking experienced and professional personnel, as well as well-maintained and quality equipment. The services and equipment we offer for hire include, but are not limited to:

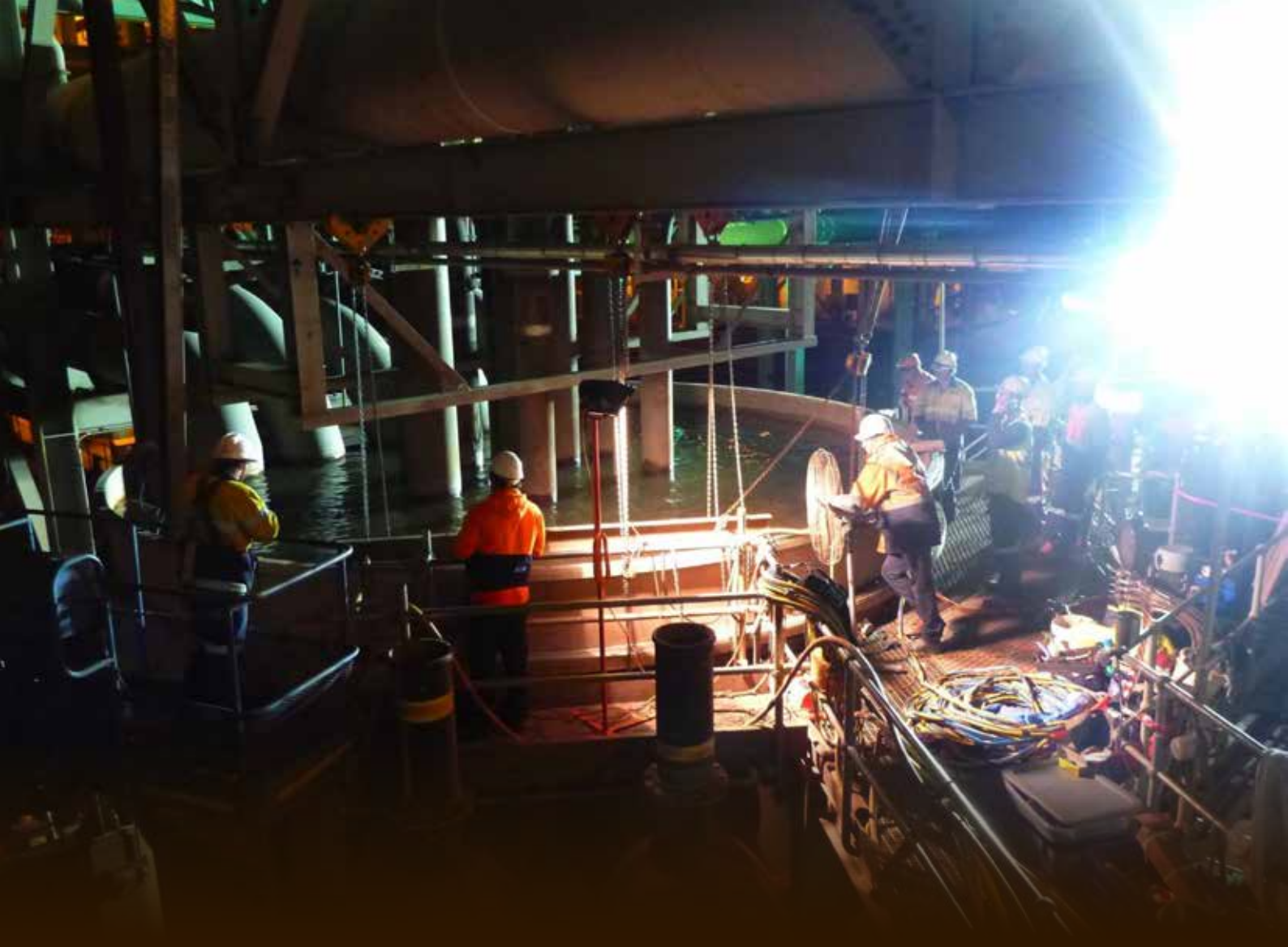
- Commercial vessel and barge hire
- Underwater tool hire and specialized marine equipment hire
- Coxswain and master labour hire
- Marine labour hire
- Environmental monitoring labour and vessel hire
- Marine security vessel and labour



DESIGN & FABRICATION

To offer our clients cost saving measures, particularly on our larger turnkey marina construction project, Shorewater Marine now has its own inhouse marine drafting division, leading us to complete development and fabrication into a facet of our company structure that we now offer all our clients, from concept stage to fabrication and installation.





QUALITY & SAFETY

Our quality & safety systems have been structured with our clients requirements in mind. Strategic planning and definition of our objectives prior, during and on completion of our works assist us in ensuring our employees' professional conduct on work sites, the quality of work they complete and the safe way in which they complete it. The quality of information we provide on completion via data compilation, summary reporting and follow up correspondence - sets Shorewater Marine aside from our competitors.



WA DEFENCE REVIEW

INDUSTRY | TECHNOLOGY | CRITICAL INFRASTRUCTURE & RESOURCES | POLICY | GEO-POLITICS | NATIONAL SECURITY

2022-23 ANNUAL PUBLICATION

SEE WHAT'S INSIDE

-  **HON RICHARD MARLES**
DEPUTY PRIME MINISTER & MINISTER FOR DEFENCE
-  **HON PAT CONROY**
MINISTER FOR DEFENCE INDUSTRY
-  **HON ROGER COOK**
PREMIER, WESTERN AUSTRALIA
-  **HON NATASHA FYLES**
CHIEF MINISTER, NORTHERN TERRITORY
-  **ADM ROB BAUER**
CHAIR, MILITARY COMMITTEE, NATO
-  **PADDY GREGG**
CEO, AUSTAL



(18887) \$29.95



tammar
contractors
YOUR PARTNER IN ABORIGINAL ENGAGEMENT

Labour Hire
Test and Tag
Rigging and Cranage
99 Discovery Drive, Bibra Lake, WA 6163
P: 0447 964 813 OR 0418 380 465
E: contact@tammarcontractors.com.au



EFFECTIVE SOLUTIONS FOR ALL YOUR MARINE REQUIREMENTS

Shore Water Marine Pty Ltd is a leading provider of Commercial Diving, Marine Construction, and Marine Asset Management services in Western Australia. We have a long history of providing a wide range of services to the maritime industry, including diving, marine construction, and asset management. Our experienced and highly skilled team is committed to providing the highest quality of service to our clients.

We are equipped with state-of-the-art equipment and a fleet of specialised vessels that can undertake all manner of marine work, both in temperate Australia and tropical waters. Our extensive fleet of vessels, combined with our experienced and highly skilled team, ensures that we can provide the highest quality of service to our clients.

Our team of highly skilled individuals, supported by our extensive fleet of specialised vessels, is committed to providing the highest quality of service to our clients. Our extensive fleet of vessels, combined with our experienced and highly skilled team, ensures that we can provide the highest quality of service to our clients.

p 76



CAPABILITIES:
ALL ASPECTS OF COMMERCIAL DIVING
IN WATER SURVEYS AND INSPECTIONS
UNDERWATER CONSTRUCTION
CORROSION CONTROL
NAVIGATIONAL AID & MOORINGS
MARINE CARPENTRY & ASSET MAINTENANCE



SEE WHAT'S INSIDE

WA DEFENCE REVIEW

-  **HON RICHARD MARLES**
DEPUTY PRIME MINISTER & MINISTER FOR DEFENCE
-  **HON PAT CONROY**
MINISTER FOR DEFENCE INDUSTRY
-  **HON ROGER COOK**
PREMIER, WESTERN AUSTRALIA
-  **HON NATASHA FYLES**
CHIEF MINISTER, NORTHERN TERRITORY
-  **ADM ROB BAUER**
CHAIR, MILITARY COMMITTEE, NATO
-  **PADDY GREGG**
CEO, AUSTAL



tammar
contractors
YOUR PARTNER IN ABORIGINAL ENGAGEMENT

Labour Hire
Test and Tag
Rigging and Cranage
99 Discovery Drive, Bibra Lake, WA 6163
P: 0447 964 813 OR 0418 380 465
E: contact@tammarcontractors.com.au





SHOREWATER MARINE PTY LTD
Head Office & Warehouse
96B Callaway St Wangara WA 6065
PH: +61 8 9408 0896
E: info@shorewatermarine.com.au
www.shorewatermarine.com.au

Shaun Williamson
Managing Director
+61 407 770 676
Peter Daly
Operations Manager
+61 422 255 506